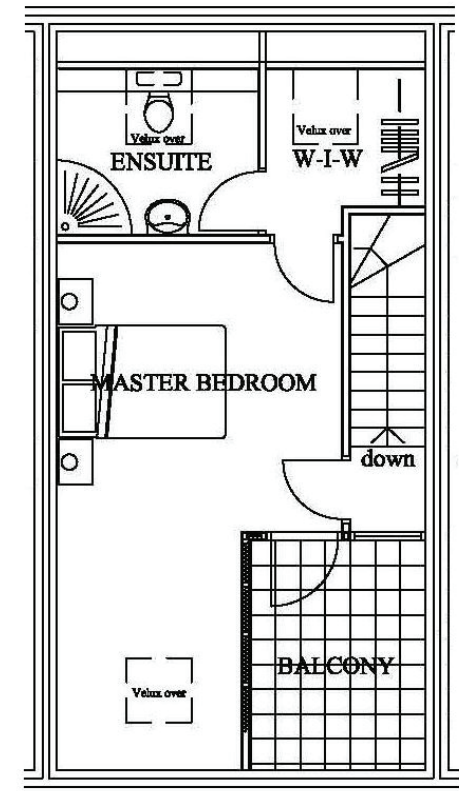
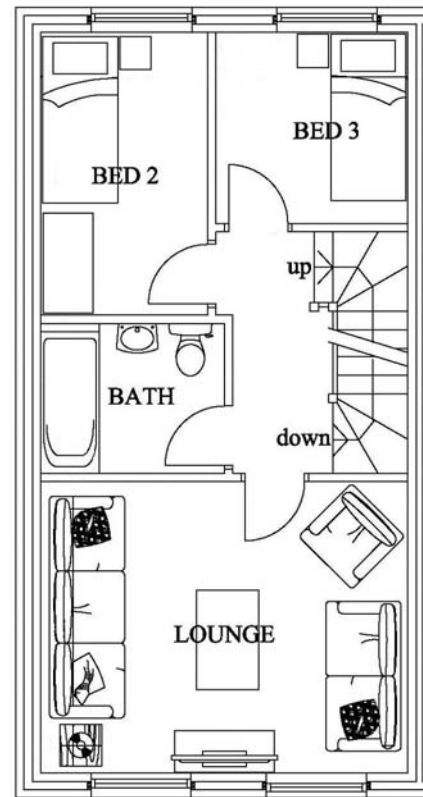
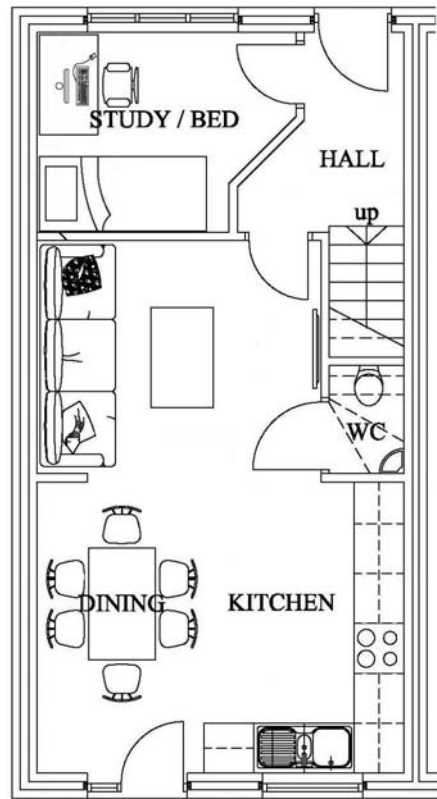


Block C

Plots 1 - 4



GROUND FLOOR		FIRST FLOOR		SECOND FLOOR	
Kitchen/Dining	4.40m x 3.50m	Lounge	4.40m x 3.50m	Master Bed	(max) 3.40m x 6.35m
Family area	3.40m x 2.80m	Bedroom 2	2.00m x 3.40m	En-suite	(max) 11'2" x 20'10"
Study/Bed 5	2.30m x 2.40m	Bedroom 3	2.30m x 2.30m	Walk in wardrobe	2.39m x 2.0m
		Bathroom	2.20m x 1.80m		7'10" x 6'7"
					1.90m x 1.80m
					6'3" x 5'11"

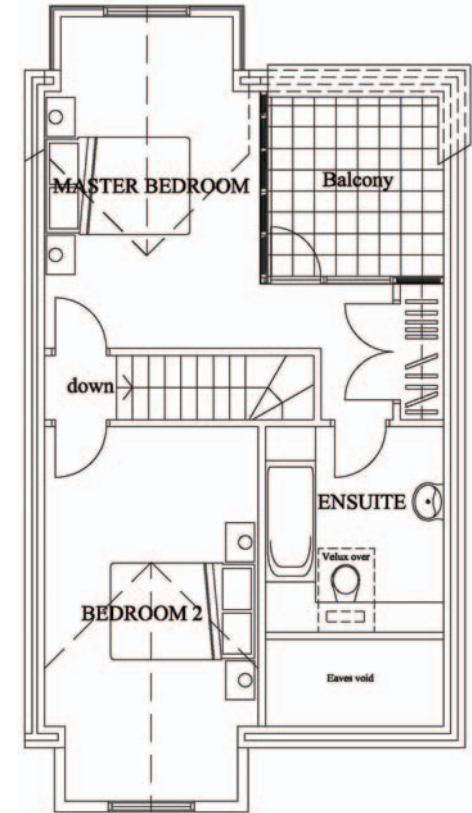
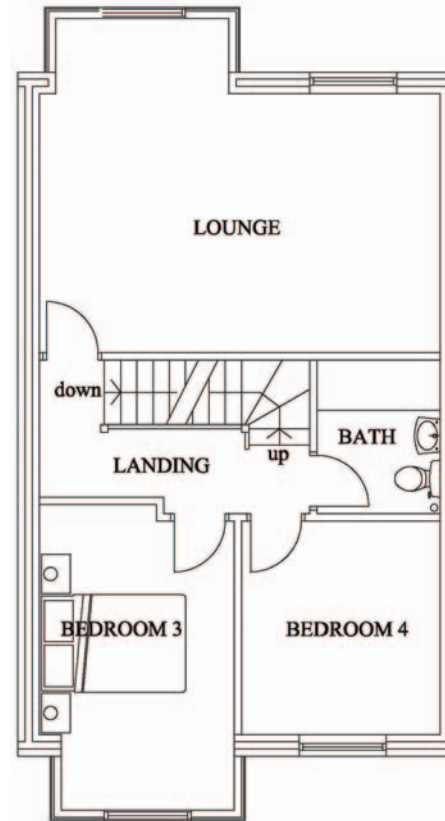
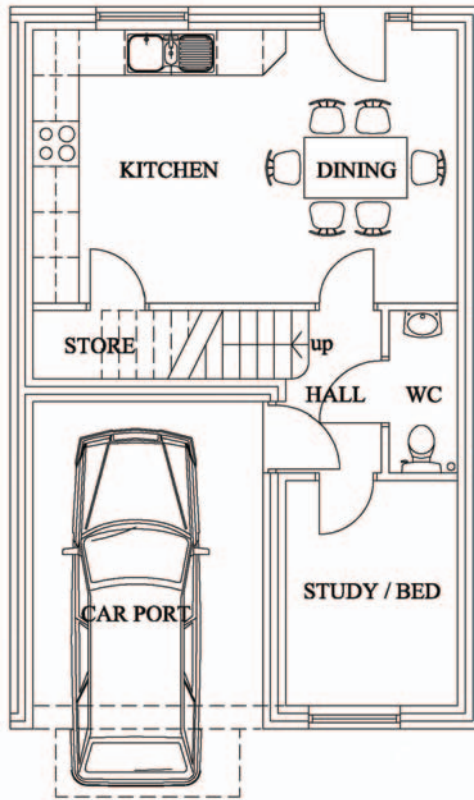


Floor plans & room sizes are for guidance only and are approximate
Not to be used for measurements of carpets, curtains etc.



Block D

Plot 5



GROUND FLOOR			FIRST FLOOR			SECOND FLOOR		
Kitchen/dining	(max) 5.50m x 3.60m	(max) 18'1" x 11'10"	Lounge	(max) 5.50m x 4.65m	(max) 18'1" x 15'3"	Master Bed	3.00m x 4.65m	9'10" x 15'3"
Study/Bed 5	2.25m x 2.97m	7'5" x 9'9"	Bedroom 3	2.70m x 4.25m	8'10" x 15'3"	En-suite	2.48m x 2.88m	8'2" x 9'5"
			Bedroom 4	2.75m x 2.97m	9'0" x 9'5"	Bedroom 2	2.98m x 4.20m	9'9" x 13'9"
			Bathroom	1.70m x 2.13m	5'7" x 7'0"			

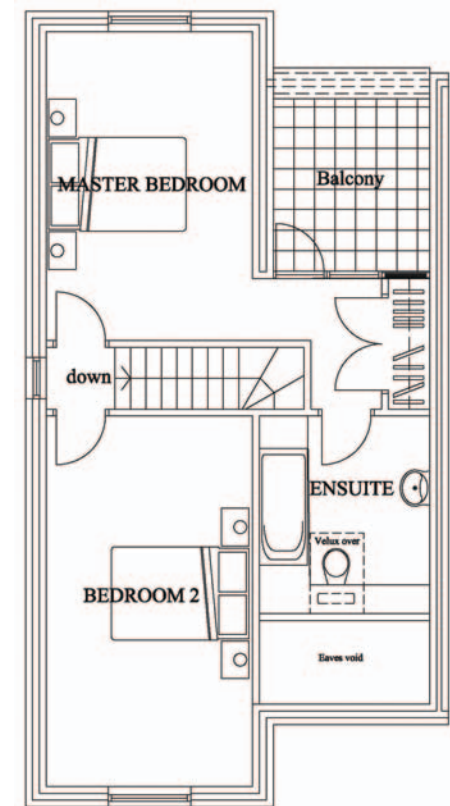
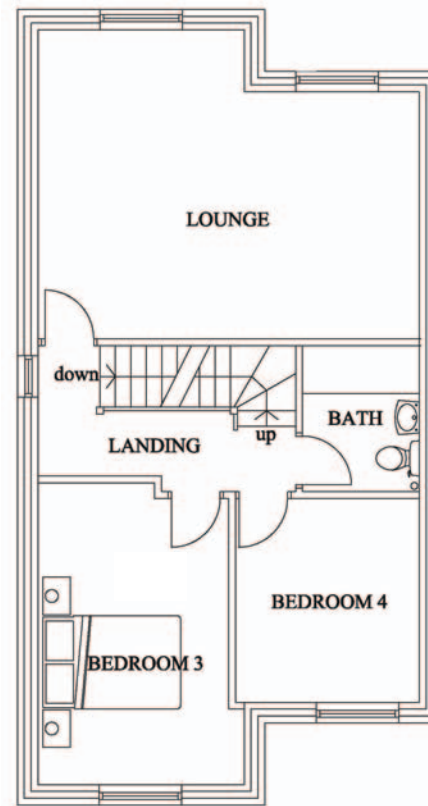
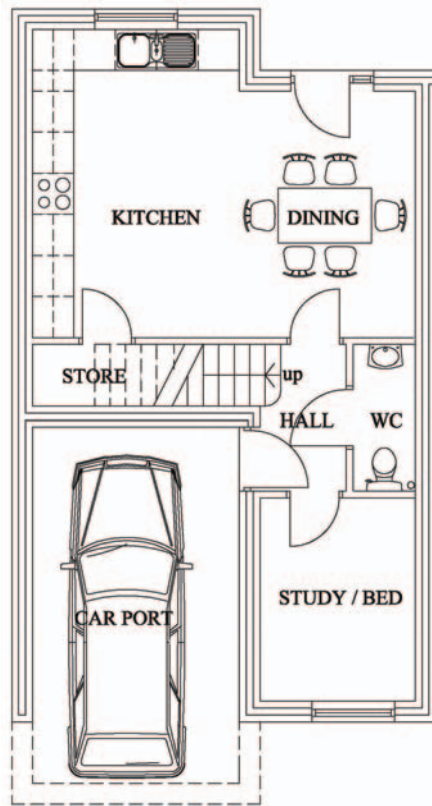


Floor plans & room sizes are for guidance only and are approximate
Not to be used for measurements of carpets, curtains etc.



Block D

Plot 6



GROUND FLOOR			FIRST FLOOR	(max)	(max)	SECOND FLOOR		
Kitchen/dining	(max) 5.50m x 4.50m	(max) 18'1" x 14'9"	Lounge	5.50m x 4.50m	18'1" x 14'9"	Master Bed	3.00m x 4.50m	9'10" x 14'9"
Study/Bed 5	2.25m x 2.97m	7'5" x 9'9"	Bedroom 3	2.77m x 4.50m	9'1" x 14'1"	En-suite	2.47m x 2.88m	8'1" x 9'5"
			Bedroom 4	2.67m x 2.97m	8'9" x 9'9"	Bedroom 2	3.00m x 5.40m	9'10" x 17'9"
			Bathroom	1.70m x 2.13m	5'7" x 7'0"			

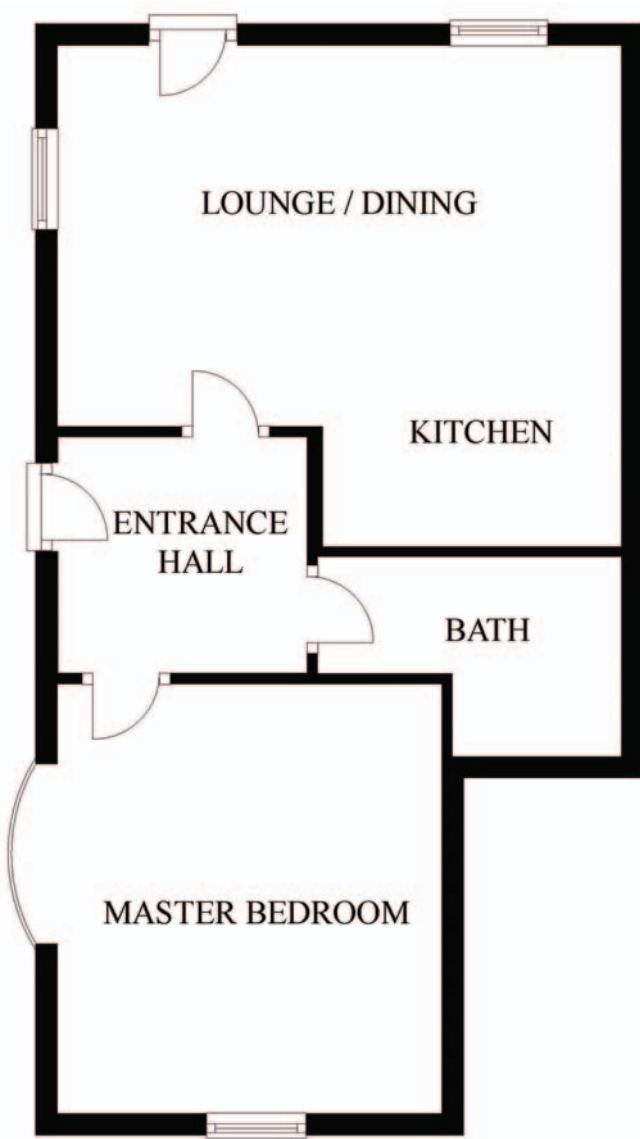


Floor plans & room sizes are for guidance only and are approximate
Not to be used for measurements of carpets, curtains etc.



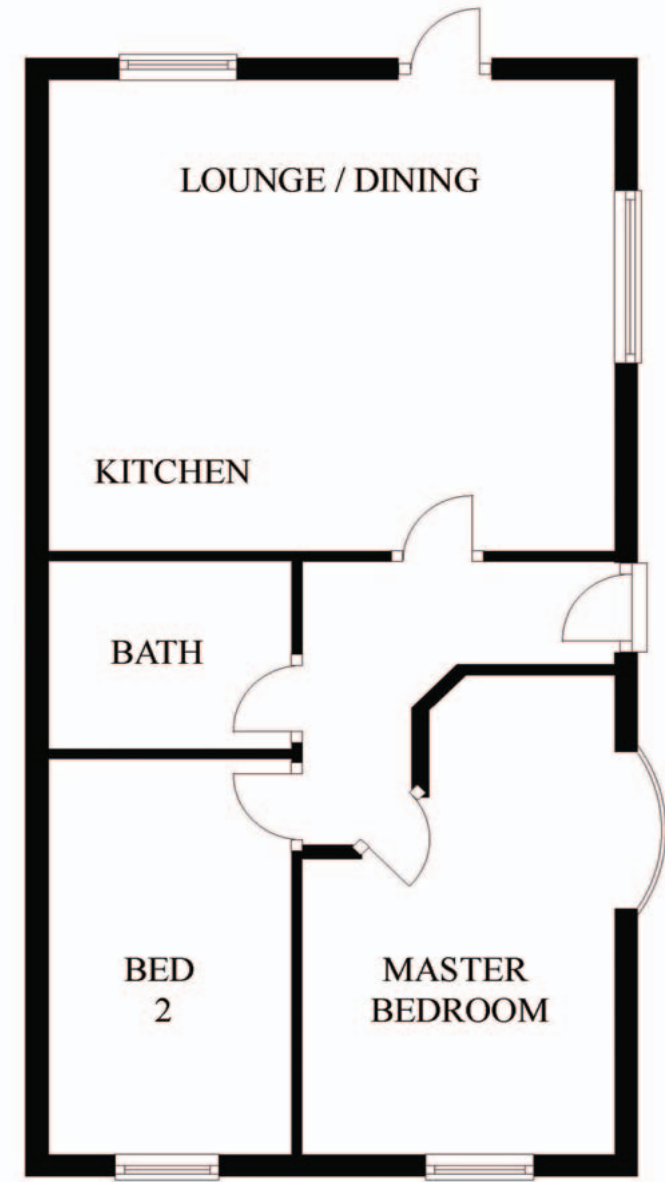
Block B

Plots 7 & 8



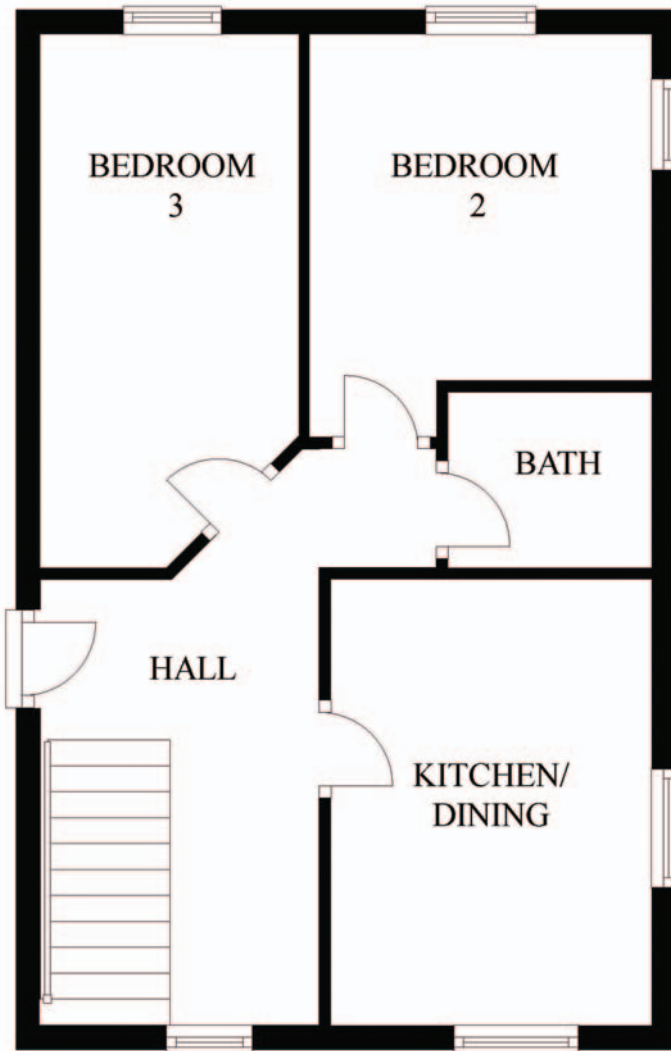
PLOT 7	
Master Bed	3.10m x 4.50m 10'2" x 14'9"
Bathroom	2.10m x 1.70m 6'11" x 5'7"
Bed 2	2.10m x 3.80m 6'11" x 12'6"
Kitchen area	3.00m x 1.50m 9'10" x 4'11"
Lounge/dining	5.40m x 3.80m 17'9" x 12'6"

PLOT 8	
Master Bed	3.10m x 3.50m 10'2" x 11'6"
Bathroom	3.00m x 1.70m 9'10" x 5'7"
Kitchen area	3.00m x 1.50m 9'10" x 4'11"
Lounge/dining	5.40m x 3.80m 17'9" x 12'6"



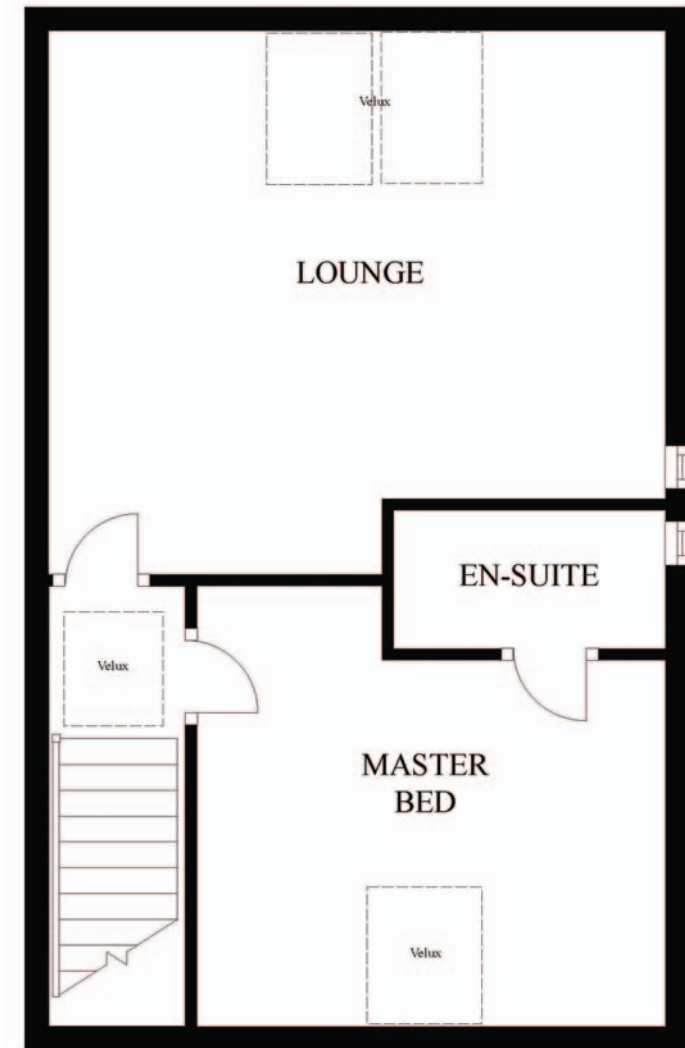
Floor plans & room sizes are for guidance only and are approximate
Not to be used for measurements of carpets, curtains etc.





FIRST FLOOR	
Kitchen/dining	3.00 x 4.65m 9'10" x 15'3"
Bath	2.10m x 1.70m 6'11" x 5'7"
Bedroom 2	3.10m x 3.60m 10'2" x 11'10"
Bedroom 3	2.00m x 3.70m 6'7" x 12'2" (max 5.00m) (max 16'5")

SECOND FLOOR	
Lounge	5.20m x 5.40m 17'1" x 17'9"
Master bed	4.30m x 4.60m 14'1" x 15'1"
En-suite	

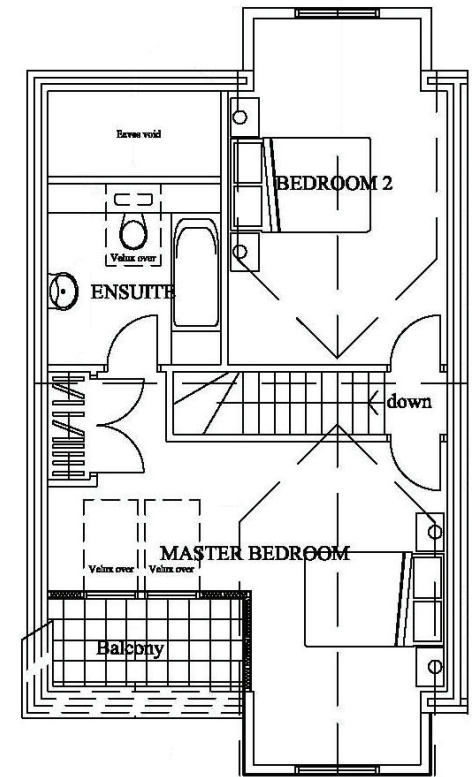
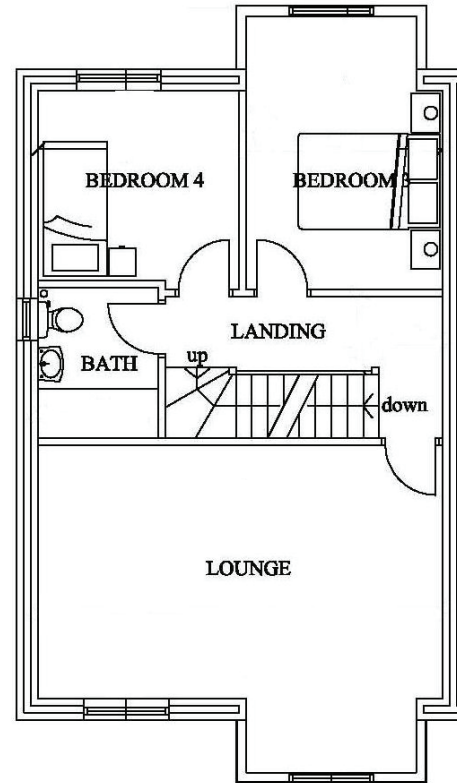
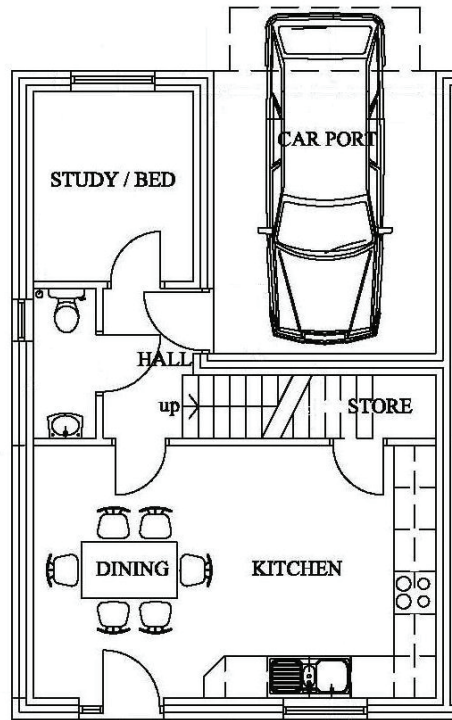


Floor plans & room sizes are for guidance only and are approximate
Not to be used for measurements of carpets, curtains etc.



Block A

Plots 11 & 17



GROUND FLOOR		FIRST FLOOR		SECOND FLOOR	
Kitchen/dining	3.60m x 5.72m	Lounge	(min) 3.60m x 5.72m	Master Bed	4.65m x 5.72m
Study/Bed 5	2.70m x 2.27m	Bathroom	(min) 2.13m x 1.70m	En-suite	15'3" x 18'9"
	8'10" x 7'5"	Bed 3	(min) 3.40m x 2.77m	Bed 2	5.23m x 3.15m
		Bed 4	(min) 2.70m x 2.85m		17'2" x 10'4"

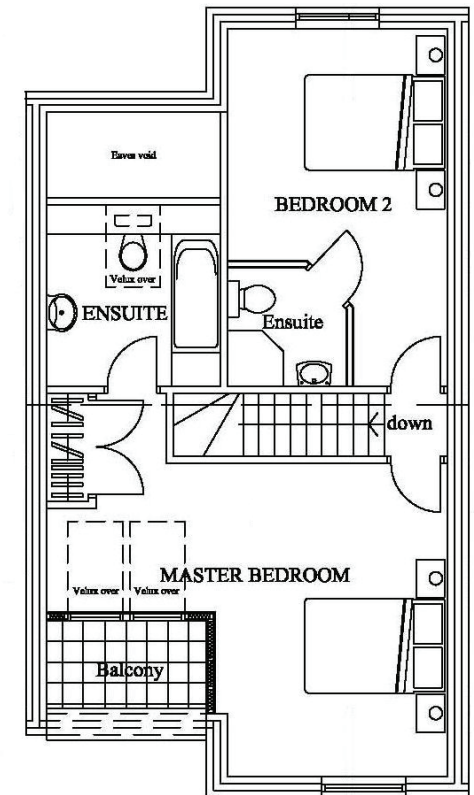
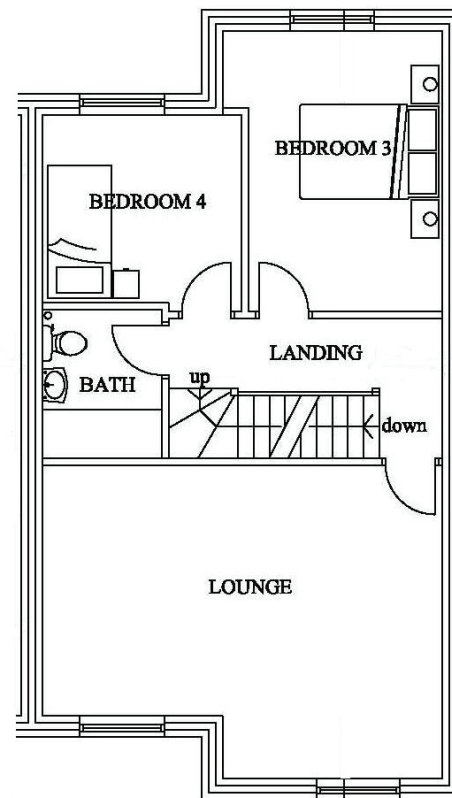
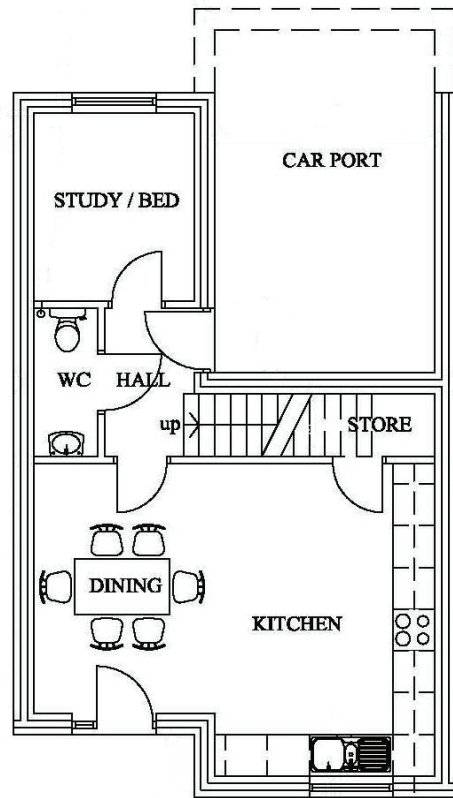


Floor plans & room sizes are for guidance only and are approximate
Not to be used for measurements of carpets, curtains etc.



Block A

Plots 12, 13, 15 & 16

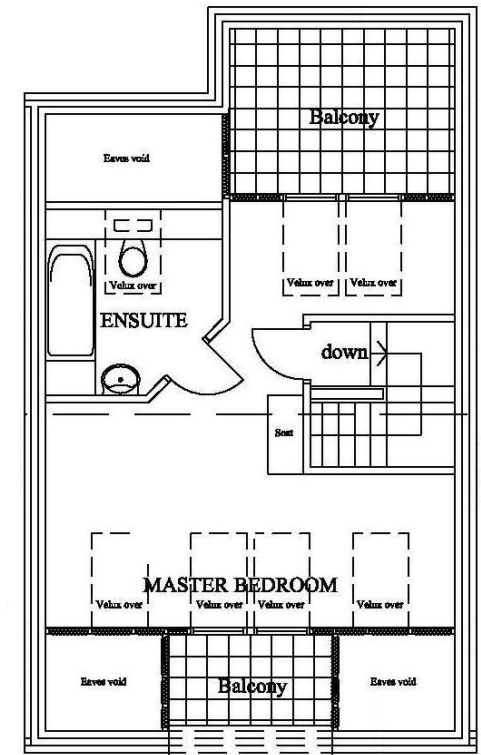
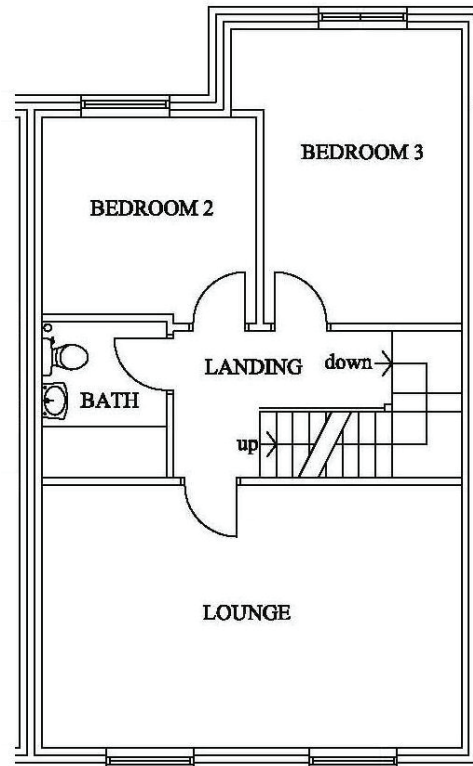
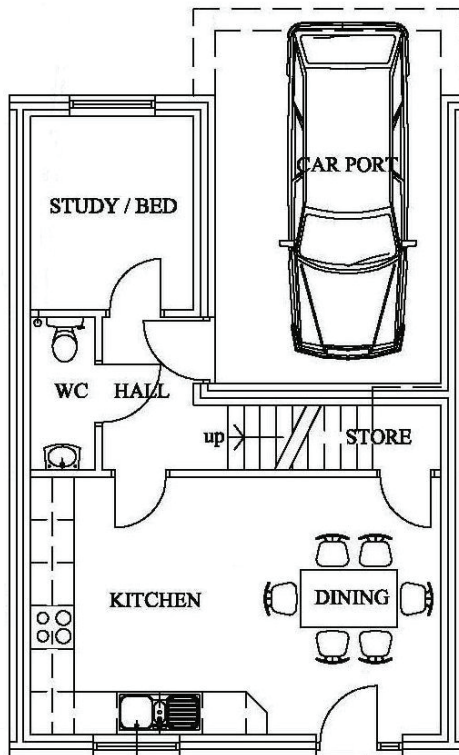


GROUND FLOOR			FIRST FLOOR			SECOND FLOOR	
Kitchen/dining	(max) 4.50m x 5.72m	(max) 14'9" x 18'9"	Lounge	(max) 4.50m x 5.72m	(max) 11'10" x 18'9"	Master Bed	4.5m x 5.72m 14'9" x 18'9"
Study/Bed 5	2.70m x 2.27m	8'10" x 7'5"	Bathroom	2.13m x 1.70m	7'0" x 5'7"	En-suite	
			Bed 3	4.03m x 2.77m	13'3" x 8'10"	Bed 2	5.23m x 3.15m 17'2" x 10'4"
			Bed 4	2.70m x 2.85m	8'10" x 9'4"		



Floor plans & room sizes are for guidance only and are approximate
Not to be used for measurements of carpets, curtains etc.





GROUND FLOOR		FIRST FLOOR		SECOND FLOOR	
Kitchen/dining	3.60m x 5.72m 11'10" x 18'9"	Lounge	3.60m x 5.72m 11'10" x 18'9"	Master Bed	3.15m x 5.72m 10'4" x 18'9"
Study/Bed 5	2.70m x 2.27m 8'10" x 7'5"	Bathroom		En-suite	
		Bed 2	2.70m x 2.92m 8'10" x 9'7"		
		Bed 3	4.03m x 2.70m 13'3" x 8'10"		



Floor plans & room sizes are for guidance only and are approximate
Not to be used for measurements of carpets, curtains etc.

